



Causeway

International Small Cap

Quarterly Webcast

June 30, 2024

Los Angeles, CA

Dallas, TX Bryn Mawr, PA Melbourne, Australia Shanghai, China (Subsidiary)

www.causewaycap.com

Solely for the use of institutional investors and professional advisers.
GIPS Report and Disclosures begin on page 15 of the presentation.

Summary

- > Causeway International Small Cap strategy outperformed MSCI ACWI ex USA Small Cap Index in Q2
- > All bottom-up alpha factor categories added value, although top-down was negative
- > Stock selection was particularly strong in Financials and Industrials
- > Relative performance also benefited from the portfolio's overweight to Turkey and underweight to Real Estate

Snapshot

as of June 30, 2024

ASSETS*

Total Assets (USD)	670,462,529
--------------------	-------------

* Total strategy assets differs from total Composite assets because certain accounts are in different Composites

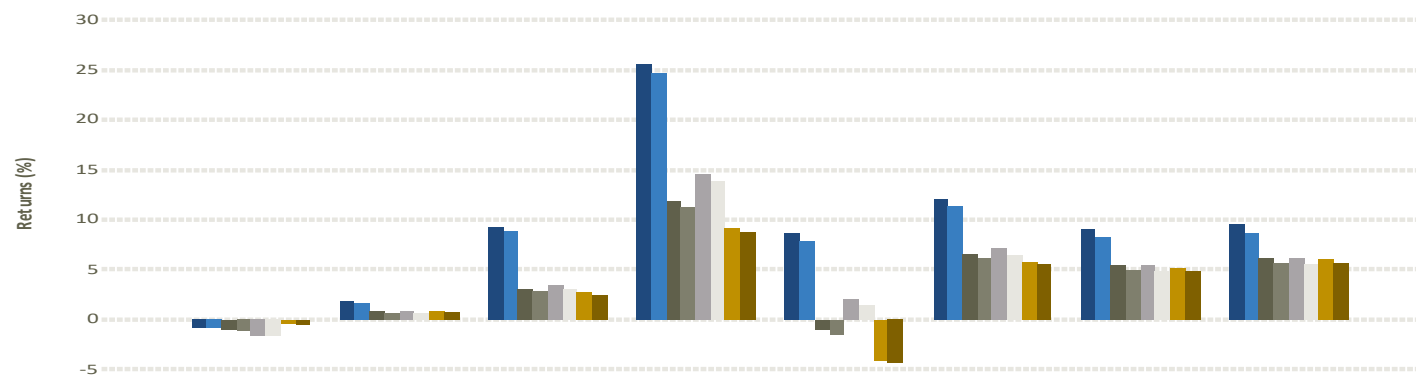
CHARACTERISTICS

	International Small Cap	MSCI ACWI ex USA Small Cap	MSCI ACWI ex USA Small Cap Value	MSCI ACWI ex US Small Cap Growth
No. of Holdings	182	4,354	2,569	2,425
Wtd Avg Mkt Cap (Mn)	2,640	1,961	1,800	2,120
NTM Price/Earnings	8.3x	13.2x	10.6x	16.5x
P/B Value	1.0x	1.4x	1.0x	2.4x
Dividend Yield	3.8%	2.7%	3.8%	1.6%
Return on Equity	17.3%	7.8%	6.7%	10.5%
LTM Wtd Avg Price Momentum	52.8%	31.3%	25.0%	37.4%
NTM Wtd Avg EPS Revision	15.9%	3.3%	1.5%	4.9%

NTM= Next twelve months. LTM= Last twelve months. EPS= earnings per share. Price-to-earnings and price-to-book value ratios are weighted harmonic averages. Dividend yield is a weighted average. Return on Equity is calculated as a weighted average, winsorized using maximum Return on Equity figures at 3 standard deviations from the mean (winsorization is a statistical technique intended to remove the impact of outliers). Characteristics are derived from a representative account within the International Small Cap strategy.

Performance

COMPOSITE PERFORMANCE for the periods ended June 30, 2024



	Month	Quarter	Year to Date	1 Year	3 Years	5 Years	7 Years	Since Inception
■ Causeway International Small Cap Composite (Gross)	-0.83	1.80	9.30	25.55	8.63	12.10	9.05	9.56
■ Causeway International Small Cap Composite (Net)	-0.89	1.62	8.93	24.71	7.91	11.34	8.25	8.68
■ MSCI ACWI ex USA Small Cap (Gross)	-1.01	0.85	3.08	11.80	-0.96	6.60	5.37	6.15
■ MSCI ACWI ex USA Small Cap (Net)	-1.06	0.66	2.78	11.26	-1.45	6.13	4.92	5.71
■ MSCI ACWI ex USA Small Cap Value (Gross)	-1.58	0.89	3.46	14.55	2.13	7.10	5.42	6.14
■ MSCI ACWI ex USA Small Cap Value (Net)	-1.66	0.64	3.06	13.81	1.47	6.47	4.82	5.56
■ MSCI ACWI ex US Small Cap Growth (Gross)	-0.44	0.81	2.70	9.10	-4.08	5.83	5.13	6.00
■ MSCI ACWI ex US Small Cap Growth (Net)	-0.46	0.68	2.51	8.75	-4.39	5.52	4.84	5.71

Inception Date: 11/30/2014

Returns are in USD. Index returns are presented gross or net of tax withholdings on income and dividends. The gross composite performance presented is before management and custody fees but after trading expenses. Net composite performance is presented after the deduction of actual management fees, performance-based fees, and all trading expenses, but before custody fees. Composite performance is net of foreign dividend withholdings during certain periods. Annualized for periods greater than one year. See end of presentation for important disclosures regarding the composite. This information supplements the attached composite presentation. Performance quoted is past performance. Past performance is not an indication of future results.

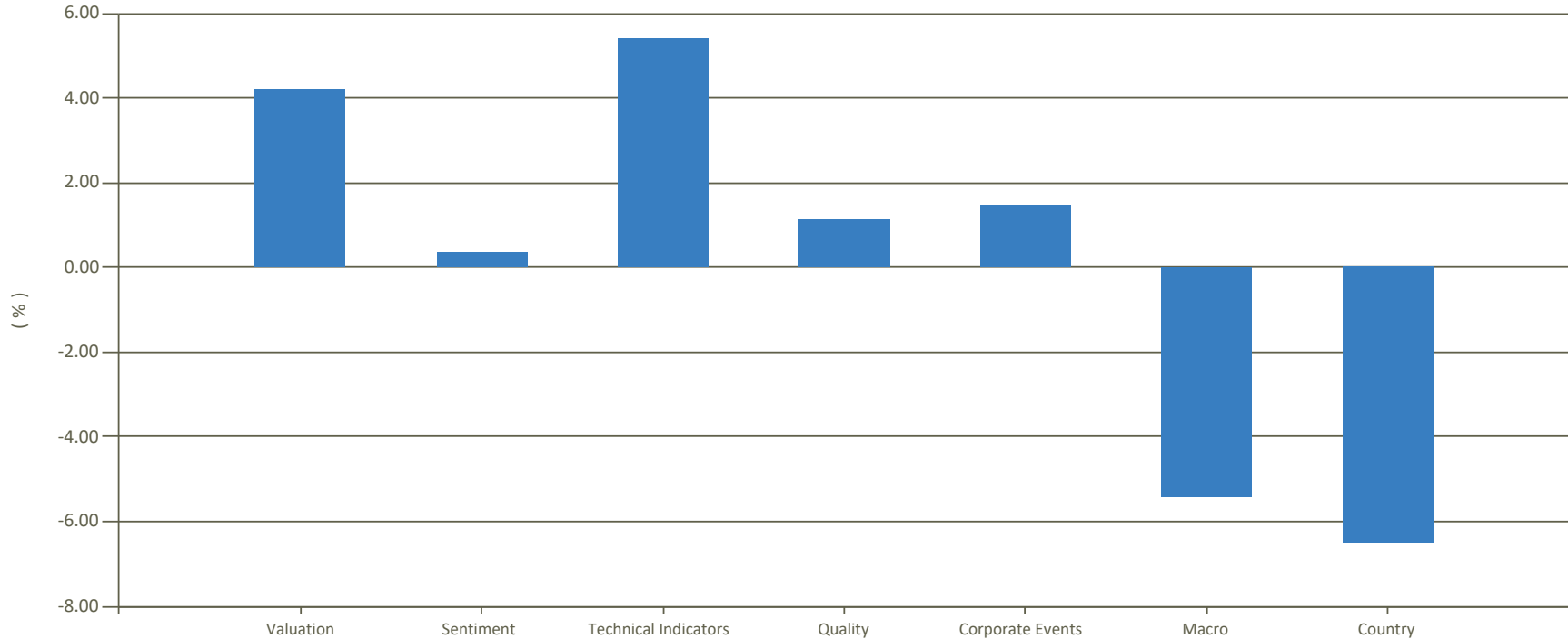


International Small Cap Universe Factor Performance

for the quarter ended June 30, 2024

<p>Factors Driving Security Selection:</p>	<p>Bottom-Up Factors (90%)</p> <ul style="list-style-type: none"> - Valuation - Sentiment - Technical Indicators - Quality - Corporate Events 	<p>Top-Down Factors (10%)</p> <ul style="list-style-type: none"> - Macroeconomic - Country Aggregate
---	---	---

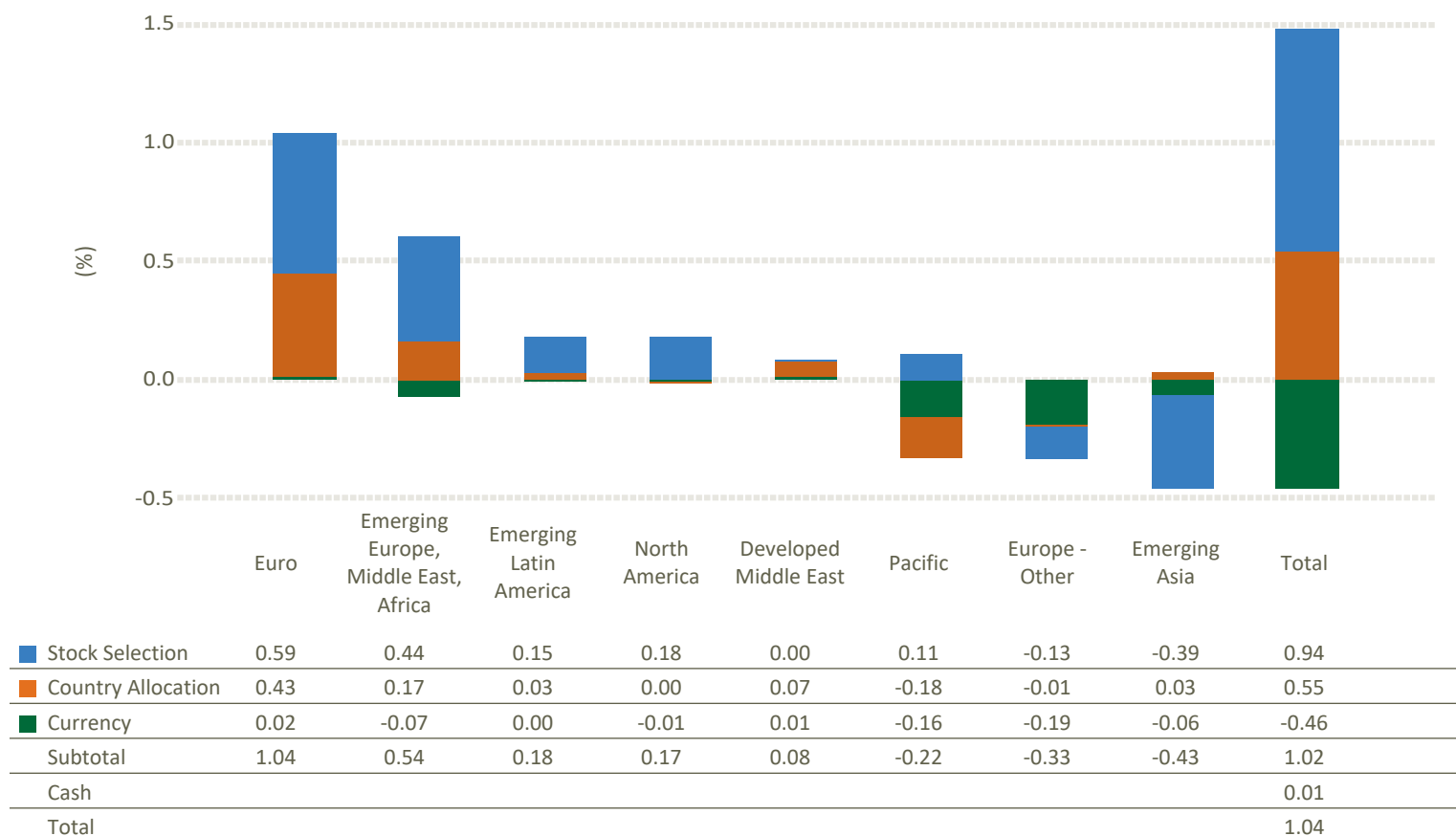
FACTOR PERFORMANCE



The Causeway International Small Cap strategy uses quantitative factors that can be grouped into the listed seven categories. Corporate Events is a new factor category introduced at the end of February; the return in the above chart is for March through June only. This new set of factors is intended to capture the typical market reaction to a wide range of corporate events including management changes, financing events, buyback/dividend changes, and delayed earnings/filings, among other events. The relative return attributed to a factor is the difference between the equally-weighted average return of the highest ranked quintile of companies in the strategy's universe and that of the lowest ranked quintile of companies based on that factor. Factors and weights are subject to change.

Representative Account Regional Attribution

REPRESENTATIVE ACCOUNT vs. MSCI ACWI EX USA SMALL CAP (Gross) for the quarter ended June 30, 2024

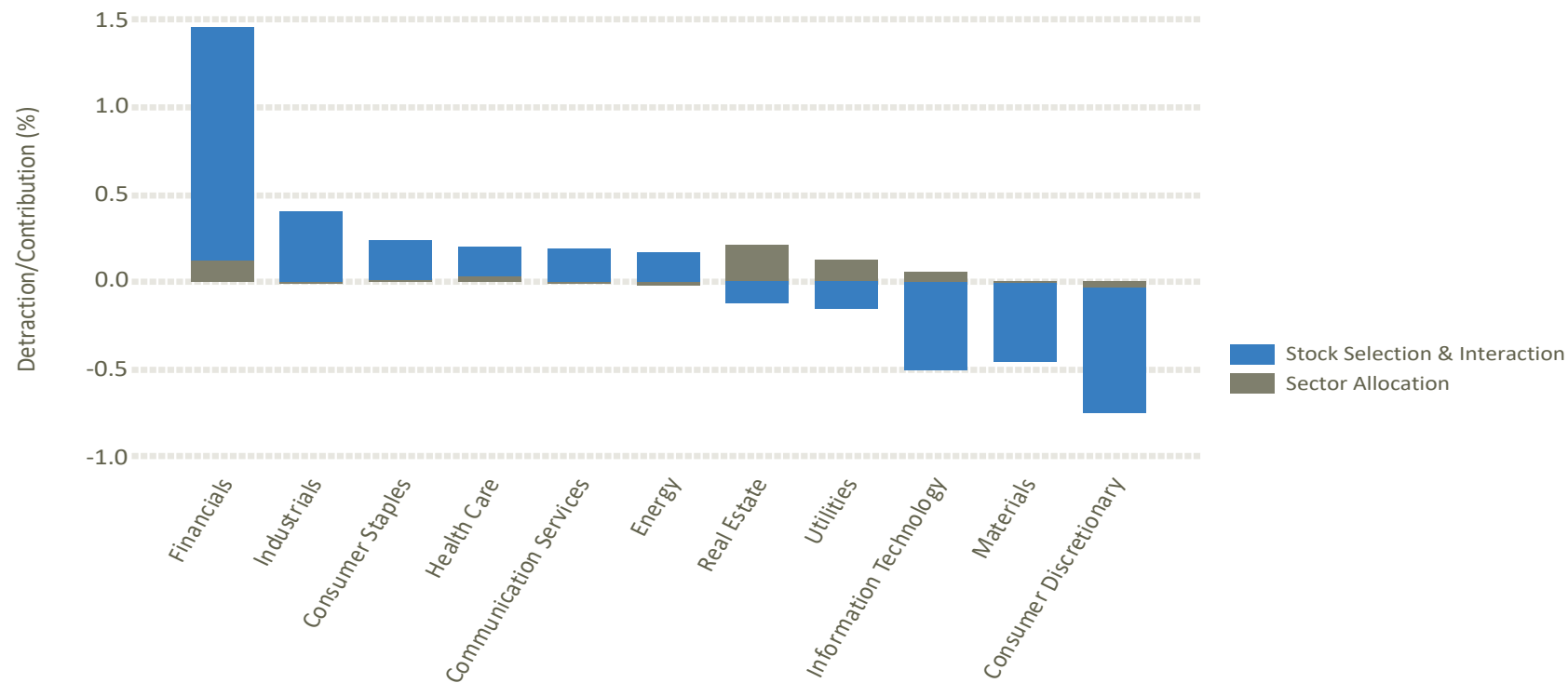


- Stock Selection:** Positive - Relative outperformance (0.98%) was due to holdings in South Korea, Australia, and Turkey; relative underperformance was due to holdings in China, Japan, and Taiwan.
- Country Allocation:** Positive - Relative outperformance (0.47%) resulted from an overweighting in Turkey and Taiwan, as well as an underweighting in France; relative underperformance resulted from an overweighting in Japan and Australia, as well as an underweighting in India.
- Currency:** Negative - Relative underperformance (-0.42%) resulted from an overweighting in Japanese yen, as well as an underweighting in Swedish krona and British pound; relative outperformance resulted from an overweighting in Australian dollar and euro, as well as an underweighting in Mexican peso.

Before investment advisory fees. Exchange traded funds, if any, are not shown. Past performance is not an indication of future results.

Representative Account Sector Attribution

REPRESENTATIVE ACCOUNT vs. MSCI ACWI EX USA SMALL CAP (Gross) for the quarter ended June 30, 2024



Stock Selection & Interaction: Positive - Relative outperformance (0.54%) was due to holdings in financials, industrials, and consumer staples; relative underperformance was due to holdings in consumer discretionary, information technology, and materials.

Sector Allocation: Positive - Relative outperformance (0.45%) resulted from an overweighting in financials and utilities, as well as an underweighting in real estate; relative underperformance resulted from an overweighting in consumer discretionary, energy, and communication services.

Before investment advisory fees. Exchange traded funds, if any, are not shown. Past performance is not an indication of future results.

Representative Account Geographic Exposure

WEIGHTS as of June 30, 2024

	Portfolio Weights (%)	MSCI ACWIxUSA Small Cap Weights (%)	Active Weight (%)
Israel	0.0	1.8	-1.8
Developed Middle East	0.0	1.8	-1.8
Austria	0.9	0.6	0.3
Belgium	1.3	0.8	0.6
Finland	0.2	0.8	-0.5
France	0.5	2.2	-1.7
Germany	1.8	2.5	-0.7
Ireland	0.0	0.2	-0.2
Italy	6.4	2.1	4.4
Netherlands	0.5	0.8	-0.3
Portugal	0.0	0.2	-0.2
Spain	1.7	1.1	0.6
Euro	13.4	11.3	2.1
Denmark	0.8	1.5	-0.7
Norway	1.6	1.7	0.0
Sweden	1.0	3.6	-2.6
Switzerland	0.3	2.7	-2.4
United Kingdom	6.2	9.5	-3.2
Europe - Other	9.9	18.9	-9.0
Canada	5.8	6.7	-0.9
North America	5.8	6.7	-0.9
Australia	7.1	5.9	1.3
Hong Kong	0.5	1.0	-0.5
Japan	25.3	21.4	3.8
New Zealand	0.0	0.5	-0.5
Singapore	2.6	1.4	1.2
Pacific	35.5	30.1	5.4
DEVELOPED SUBTOTAL	64.6	68.7	-
EMERGING SUBTOTAL	32.8	31.3	-
MULTI REGION SUBTOTAL	0.9	0.0	-
CASH	1.6	0.0	-
TOTAL	100.0	100.0	-

	Portfolio Weights (%)	MSCI ACWIxUSA Small Cap Weights (%)	Active Weight (%)
China	2.0	2.6	-0.6
India	6.9	9.0	-2.0
Indonesia	0.5	0.5	0.0
Malaysia	0.0	0.8	-0.8
Philippines	0.0	0.2	-0.2
South Korea	6.2	3.8	2.3
Taiwan	10.5	7.1	3.4
Thailand	0.8	0.9	-0.1
Emerging Asia	26.9	24.9	2.0
Czech Republic	0.0	0.0	0.0
Egypt	0.0	0.1	-0.1
Greece	0.0	0.2	-0.2
Hungary	0.0	0.0	0.0
Kuwait	0.0	0.3	-0.3
Poland	0.0	0.4	-0.4
Qatar	0.0	0.2	-0.2
Saudi Arabia	0.5	1.2	-0.7
South Africa	0.0	1.0	-1.0
Turkey	4.3	0.8	3.6
United Arab Emirates	0.0	0.3	-0.3
Emerging Europe, Middle East,	4.9	4.5	0.4
Brazil	1.1	1.1	-0.1
Chile	0.0	0.2	-0.2
Mexico	0.0	0.5	-0.5
Peru	0.0	0.0	0.0
Emerging Latin America	1.1	1.9	-0.8

Subtotals include percentage of accrued income. Active weight defined as Representative Account weight minus Index weight. Index source: MSCI.

Representative Account Geographic Performance

INDEX RETURNS* for the quarter ended June 30, 2024

	BASE (%)	LOCAL (%)
Israel	-4.0	-1.7
Developed Middle East		
Austria	2.5	3.3
Belgium	0.8	1.5
Finland	3.8	4.6
France	-8.2	-7.5
Germany	-7.3	-6.6
Ireland	-3.4	-2.7
Italy	0.7	1.4
Netherlands	-5.4	-4.6
Portugal	4.1	4.9
Spain	9.4	10.2
Euro		
Denmark	8.0	8.8
Norway	13.5	11.4
Sweden	3.3	2.3
Switzerland	-0.2	-0.5
United Kingdom	1.9	1.9
Europe - Other		
Canada	1.3	2.5
North America		
Australia	-1.0	-3.3
Hong Kong	3.2	3.0
Japan	-5.7	0.2
New Zealand	-3.6	-5.4
Singapore	-0.9	-0.5
Pacific		

	BASE (%)	LOCAL (%)
China	2.0	1.8
India	19.6	19.6
Indonesia	-8.3	-5.3
Malaysia	11.1	10.7
Philippines	-7.7	-3.8
South Korea	1.9	4.2
Taiwan	6.3	7.7
Thailand	-7.4	-6.8
Emerging Asia		
Czech Republic	7.6	7.4
Egypt	7.8	9.2
Greece	0.0	0.8
Hungary	17.2	18.4
Kuwait	-0.8	-1.1
Poland	8.5	9.3
Qatar	5.5	5.5
Saudi Arabia	-2.0	-2.0
South Africa	15.7	11.6
Turkey	7.9	9.3
United Arab Emirates	-7.6	-7.6
Emerging Europe, Middle East, Africa		
Brazil	-17.2	-8.1
Chile	3.6	-0.3
Mexico	-18.2	-10.0
Peru	-1.4	-1.4
Emerging Latin America		

*Source: MSCI

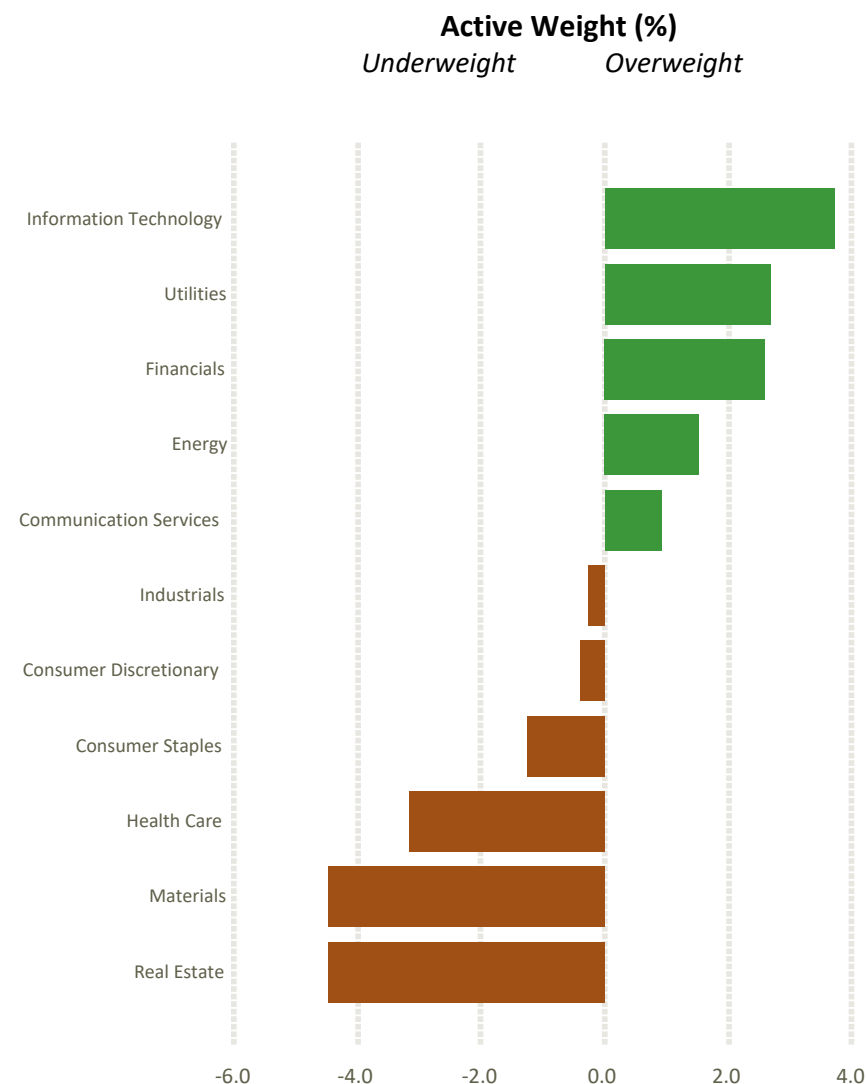
Base (%) refers to returns in USD; Local (%) refers to returns in local currency. Past performance does not guarantee future results.



Representative Account Industry Group & Sector Exposure

WEIGHTS as of June 30, 2024

	Portfolio Weights (%)	MSCI ACWIxUSA Small Cap Weights (%)	Active Weight (%)
Media & Entertainment	3.8	2.5	1.3
Telecommunication Services	0.5	1.0	-0.4
Communication Services	4.3	3.4	0.9
Automobiles & Components	3.6	2.3	1.3
Consumer Discretionary Distribution & Retail	5.2	3.1	2.1
Consumer Durables & Apparel	1.7	3.7	-1.9
Consumer Services	0.9	2.7	-1.8
Consumer Discretionary	11.4	11.7	-0.4
Consumer Staples Distribution & Retail	3.2	1.6	1.6
Food Beverage & Tobacco	1.6	3.7	-2.1
Household & Personal Products	0.0	0.8	-0.8
Consumer Staples	4.8	6.1	-1.2
Energy	5.5	4.0	1.5
Energy	5.5	4.0	1.5
Banks	4.4	4.0	0.5
Financial Services	7.2	5.6	1.6
Insurance	2.5	2.0	0.5
Financials	14.1	11.5	2.6
Health Care Equipment & Services	2.2	2.8	-0.6
Pharmaceuticals & Biotechnology	1.1	3.6	-2.6
Health Care	3.2	6.4	-3.2
Capital Goods	14.2	15.2	-1.0
Commercial & Professional Services	1.2	2.9	-1.7
Transportation	5.7	3.3	2.4
Industrials	21.1	21.4	-0.3
Semiconductors & Semi Equipment	4.3	3.9	0.4
Software & Services	2.9	3.6	-0.7
Technology Hardware & Equipment	8.8	4.7	4.1
Information Technology	15.9	12.2	3.7
Materials	6.7	11.2	-4.5
Materials	6.7	11.2	-4.5
Equity Real Estate Investment Trusts (REITs)	2.4	5.1	-2.8
Real Estate Management & Development	2.0	3.8	-1.7
Real Estate	4.4	8.9	-4.5
Utilities	5.8	3.1	2.7
Utilities	5.8	3.1	2.7
EQUITY	97.4	100.0	-
OTHER	0.9	0.0	-
CASH	1.6	0.0	-
TOTAL	100.0	100.0	-

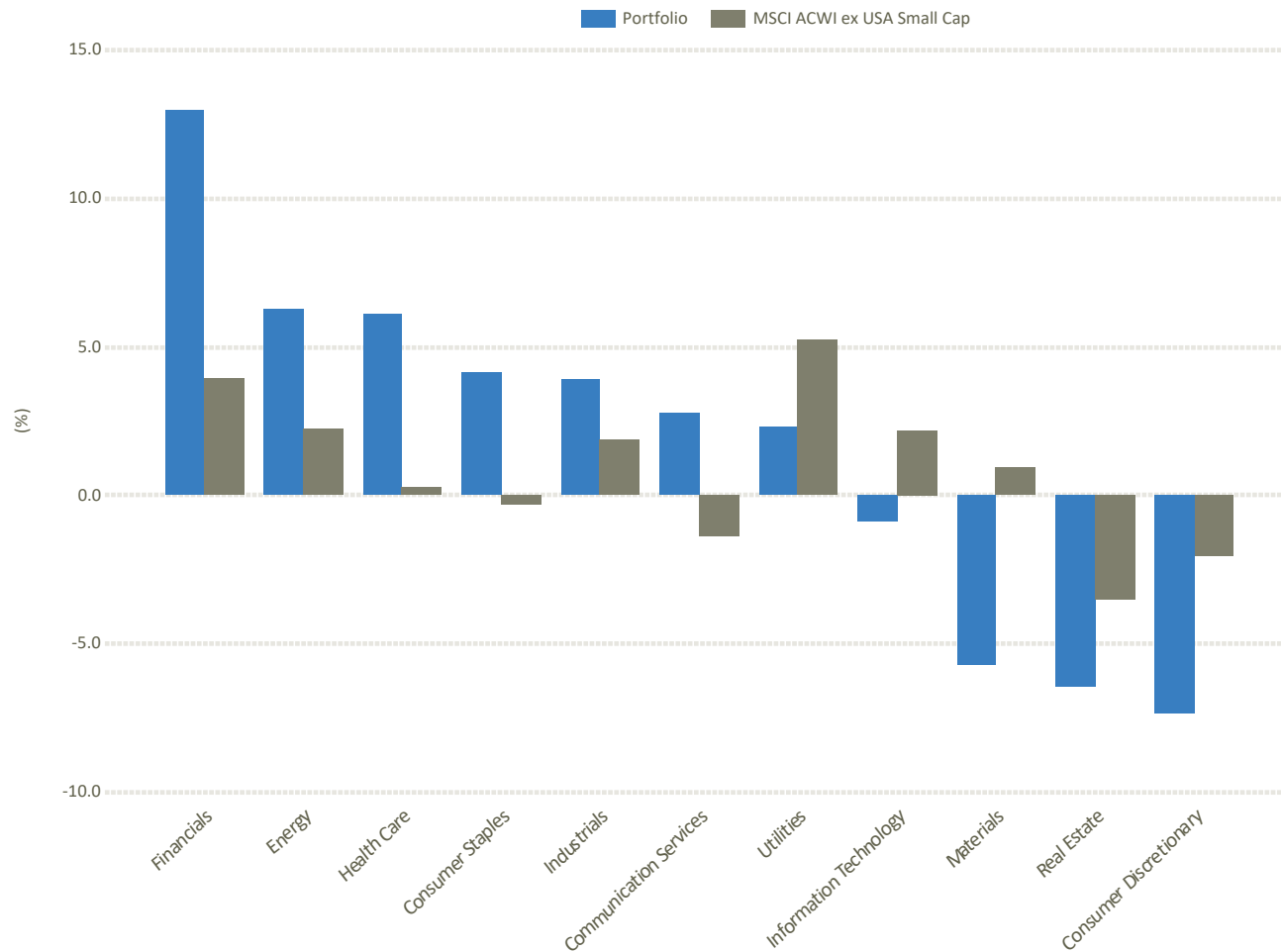


Equity includes percentage of accrued income. Active weight defined as Fund weight minus Index weight. Index source: MSCI. Indexes are unmanaged and one cannot invest directly in an index.



Representative Account Sector Performance

RETURNS for the quarter ended June 30, 2024



Before investment advisory fees. Exchange traded funds, if any, are not shown. Past performance is not an indication of future results.



Representative Account Absolute Significant Contributors and Detractors

for the quarter ended June 30, 2024

Largest Absolute Contributors

Company Name	Weight ⁽¹⁾	Portfolio Return	Contribution to Return ⁽²⁾	Country	Industry Group
Banco de Sabadell SA	0.0%	32.1%	0.43%	Spain	Banks
Power Finance Corp. Ltd.	1.8%	24.5%	0.43%	India	Financial Services
Unipol Gruppo SpA	1.9%	23.6%	0.41%	Italy	Insurance
Celestica	1.9%	27.4%	0.40%	Canada	Technology Hardware & Equipment
Radiant Opto-Electronics Corp.	1.8%	16.3%	0.34%	Taiwan	Semiconductors & Semi Equipment
MPC Container Ships ASA	0.6%	93.8%	0.33%	Norway	Transportation
Hyundai Electric & Energy Systems Co., Ltd.	0.7%	68.9%	0.31%	South Korea	Capital Goods
Bper Banca	2.0%	13.8%	0.30%	Italy	Banks
Regional Container Lines Public Co. Ltd.	0.8%	55.0%	0.28%	Thailand	Transportation
Yangzijiang Shipbuilding (Holdings) Ltd.	1.1%	33.2%	0.27%	Singapore	Capital Goods

Largest Absolute Detractors

Company Name	Weight ⁽¹⁾	Portfolio Return	Contribution to Return ⁽²⁾	Country	Industry Group
Daqo New Energy - ADR	0.5%	-48.0%	-0.46%	China	Semiconductors & Semi Equipment
Iveco Group NV	1.1%	-23.2%	-0.33%	Italy	Capital Goods
Mitsubishi Motors Corp.	1.5%	-17.5%	-0.33%	Japan	Automobiles & Components
easyJet Plc	0.9%	-19.9%	-0.20%	United Kingdom	Transportation
Russel Metals	0.9%	-17.3%	-0.20%	Canada	Capital Goods
SSAB AB	0.5%	-20.4%	-0.19%	Sweden	Materials
Sojitz Corp.	1.8%	-7.7%	-0.15%	Japan	Capital Goods
Tokyu Fudosan Holdings Corp.	0.6%	-18.7%	-0.15%	Japan	Real Estate Management & Development
SCREEN Holdings Co. Ltd.	0.0%	-8.7%	-0.14%	Japan	Semiconductors & Semi Equipment
SKY Perfect JSAT Holdings, Inc.	0.4%	-22.6%	-0.13%	Japan	Media & Entertainment

(1)Ending period weights

(2)Geometric average using daily returns and weights

Holdings are subject to change. The securities identified and described above do not represent all of the securities purchased, sold or recommended for client accounts. The reader should not assume that an investment in the securities identified was or will be profitable. Past performance is not an indication of future results. For a description of our performance attribution methodology, or to obtain a list showing every holding's contribution to the overall account's performance during the quarter, please contact our product manager, Kevin Moutes, at 310-231-6116 or moutes@causewaycap.com.



Representative Account Significant Changes

for the quarter ended June 30, 2024

Increases	Country	Industry Group	% Beginning Weight	% Ending Weight
Lotes Co., Ltd.	Taiwan	Technology Hardware & Equipment	0.0%	1.0%
TUI AG	Germany	Consumer Services	0.0%	0.9%
HYUNDAI ROTEM Co.	South Korea	Capital Goods	0.0%	0.7%
Tohoku Electric Power Co., Inc.	Japan	Utilities	0.0%	0.5%
Oji Holdings Corp.	Japan	Materials	0.0%	0.5%
Signify NV	Netherlands	Capital Goods	0.0%	0.5%
Cosmo Energy Holdings Co., Ltd.	Japan	Energy	0.0%	0.5%
Alps Alpine Co., Ltd.	Japan	Technology Hardware & Equipment	0.0%	0.5%
Tripod Technology Corp.	Taiwan	Technology Hardware & Equipment	0.0%	0.5%
Valeo SE	France	Automobiles & Components	0.0%	0.5%

Decreases	Country	Industry Group	% Beginning Weight	% Ending Weight
Banco de Sabadell SA	Spain	Banks	1.3%	0.0%
B&M European Value Retail SA	United Kingdom	Consumer Discretionary Distribution & Retail	1.1%	0.0%
SSAB AB	Sweden	Materials	1.4%	0.5%
King Yuan Electronics Co., Ltd.	Taiwan	Semiconductors & Semi Equipment	0.9%	0.0%
SCREEN Holdings Co. Ltd.	Japan	Semiconductors & Semi Equipment	0.7%	0.0%
Birlasoft Ltd.	India	Software & Services	0.5%	0.0%
Electric Power Development Co., Ltd.	Japan	Utilities	1.6%	1.1%
Sok Marketler Ticaret AS	Turkey	Consumer Staples Distribution & Retail	0.9%	0.4%
Manappuram Finance Ltd.	India	Financial Services	0.6%	0.3%
Radiant Opto-Electronics Corp.	Taiwan	Semiconductors & Semi Equipment	2.0%	1.8%

Holdings are subject to change. The securities identified and described above do not represent all of the securities purchased, sold or recommended for client accounts. The reader should not assume that an investment in the securities identified was or will be profitable. Past performance is not an indication of future results.

Representative Account Top 10 Active Holdings*

as of June 30, 2024

Company Name	MSCI ACWI ex USA		Active Weight (%)	Country	Industry Group
	Portfolio Weight (%)	Small Cap Weight (%)			
KPIT Technologies Ltd.	1.97	0.08	1.89	India	Software & Services
Bper Banca	1.99	0.12	1.87	Italy	Banks
Unipol Gruppo SpA	1.95	0.09	1.86	Italy	Insurance
Simplo Technology Co., Ltd.	1.86	0.05	1.81	Taiwan	Technology Hardware & Equipment
Power Finance Corp. Ltd.	1.80	0.00	1.80	India	Financial Services
Radiant Opto-Electronics Corp.	1.84	0.06	1.78	Taiwan	Semiconductors & Semi Equipment
Celestica	1.86	0.16	1.70	Canada	Technology Hardware & Equipment
Sojitz Corp.	1.78	0.13	1.65	Japan	Capital Goods
Mitsubishi Motors Corp.	1.49	0.04	1.45	Japan	Automobiles & Components
Credit Saison Co., Ltd.	1.33	0.07	1.26	Japan	Financial Services

*Active defined as Representative Account weight minus MSCI ACWI ex USA Small Cap Index weight.
The holdings identified above can and will differ from the Portfolio's Top 10 Holdings measured by Portfolio weight.
Holdings are subject to change.

Important Disclosures

CAUSEWAY CAPITAL MANAGEMENT LLC

International Small Cap Composite

SCHEDULE OF INVESTMENT PERFORMANCE RESULTS

FOR THE PERIOD FROM November 30, 2014 (Inception) THROUGH December 31, 2022

COMPOSITE INCEPTION DATE: November 2014 COMPOSITE CREATION DATE: November 2014

Year	Gross-of-Fees Return (%)	Net-of-Fees Return (%)	Benchmark Return (%) ^a	Number of Portfolios in Composite at End of Period	Composite Dispersion (%)	Composite 3-Yr St Dev (%)	Benchmark 3-Yr St Dev (%) ^a	Composite Assets at End of Period (\$ millions)	Total Firm Assets at End of Period (\$ millions)	Total Advisory-Only Firm Assets at End of Period (\$ millions)
2014 ^c	0.30	0.22	(1.21)	1	N/M	N/A ^b	N/A	7.05	33,630.22	3,436.32
2015	6.07	5.01	2.95	1	N/M	N/A ^b	N/A	8.63	38,585.19	2,630.69
2016	4.64	3.60	4.29	1	N/M	N/A ^b	N/A	9.12	41,731.32	2,322.17
2017	36.45	35.10	32.12	1	N/M	12.33	11.54	12.90	55,606.75	3,065.72
2018	(20.42)	(21.19)	(17.89)	2	N/M	13.00	12.36	162.40	48,462.26	2,723.16
2019	21.56	20.71	22.93	2	N/M	13.02	11.60	219.37	49,889.09	2,958.84
2020	4.35	3.59	14.67	2	N/M	20.63	20.97	178.19	42,093.18	3,073.49
2021	22.30	21.50	13.36	2	N/M	19.90	19.85	359.90	41,024.68	3,896.93
2022	(9.69)	(10.28)	(19.57)	2	N/M	22.60	22.72	383.64	34,674.99	3,807.03

N/M - Not considered meaningful for 5 portfolios or less for the full year.

^a - Not covered by the report of independent accountants.

^b - N/A as period since composite inception is less than 36 months.

^c - Partial period shown(November 30, 2014 - December 31, 2014).



Important Disclosures

Causeway Capital Management LLC (Causeway) claims compliance with the Global Investment Performance Standards (GIPS®) and has prepared and presented this report in compliance with the GIPS standards. Causeway has been independently verified for the periods June 11, 2001 through December 31, 2022.

A firm that claims compliance with the GIPS standards must establish policies and procedures for complying with all the applicable requirements of the GIPS standards. Verification provides assurance on whether the firm's policies and procedures related to composite and pooled fund maintenance, as well as the calculation, presentation, and distribution of performance, have been designed in compliance with the GIPS standards and have been implemented on a firm-wide basis. The International Small Cap Composite has had a performance examination for the periods November 30, 2014 through December 31, 2022. The verification and performance examination reports are available upon request.

GIPS® is a registered trademark of CFA Institute. CFA Institute does not endorse or promote this organization, nor does it warrant the accuracy or quality of the content contained herein.

The Firm, Causeway, is organized as a Delaware limited liability company and began operations in June 2001. It is registered as an investment adviser with the U.S. Securities and Exchange Commission under the Investment Advisers Act of 1940. Registration does not imply a certain level of skill or training. Causeway manages international, global, and emerging markets equity assets primarily for institutional clients including corporations, pension plans, sovereign wealth funds, superannuation funds, public retirement plans, Taft-Hartley pension plans, endowments and foundations, mutual funds and other collective investment vehicles, charities, private trusts and funds, model and SMA programs, and other institutions. The Firm includes all discretionary and non-discretionary accounts managed by Causeway.

The International Small Cap Composite includes all U.S. dollar denominated, discretionary accounts in the international small cap equity strategy. The international small cap equity strategy seeks long-term growth of capital through investment primarily in common stocks of companies with small market capitalizations located in developed and emerging markets outside the U.S using a quantitative investment approach. New accounts are included in the International Small Cap Composite during the first full . Terminated accounts are included in the International Small Cap Composite through the last full month under management. A complete list and description of Firm composites is available upon request.

Account returns are calculated daily. Monthly account returns are calculated by geometrically linking the daily returns. The return of the International Small Cap Composite is calculated monthly by weighting monthly account returns by the beginning market values. Valuations and returns are computed and stated in U.S. dollars. Returns include the reinvestment of interest, dividends and any capital gains. Returns are calculated gross of withholding taxes on dividends, interest income, and capital gains. The Firm's policies for valuing portfolios, calculating performance, and preparing compliant presentations are available upon request. Past performance is no guarantee of future performance. Composite dispersion, if applicable, is calculated using the equal-weighted standard deviation of all portfolios that were included in the International Small Cap Composite for the entire year. The three-year annualized ex-post standard deviation quantifies the variability of the composite or benchmark returns over the preceding 36-month period.

The benchmark of the International Small Cap Composite is the MSCI ACWI ex USA Small Cap Index, which is a free float-adjusted market capitalization weighted index, designed to measure the equity market performance of smaller capitalization stocks in developed and emerging markets excluding the U.S. market, consisting of 46 country indices. The Index covers approximately 14% of the free float-adjusted market capitalization in each country. The Index is gross of withholding taxes, assumes reinvestment of dividends and capital gains, and assumes no management, custody, transaction or other expenses. Accounts in the International Small Cap Composite may invest in countries not included in the MSCI ACWI ex USA Small Cap Index, and may use different benchmarks.

Gross-of-fees returns are presented before management, performance and custody fees but after trading expenses. Net-of-fees returns are presented after the deduction of actual management fees, performance-based fees, and all trading expenses, but before custody fees. Causeway's basic management fee schedules are described in its Firm brochure pursuant to Part 2 of Form ADV. The basic separate account annual fee schedule for international small cap equity assets under management is: 0.80% of the first \$150 million and 0.65% thereafter. Accounts in the International Small Cap Composite may have different fee schedules.

MSCI has not approved, reviewed or produced this report, makes no express or implied warranties or representations, and is not liable whatsoever for any data in the report. You may not redistribute the MSCI data or use it as a basis for other indices or investment products.



Important Disclosures

This presentation expresses Causeway's views as of 6/30/2024 and should not be relied on as research or investment advice regarding any stock. These views and any portfolio holdings and characteristics are subject to change. There is no guarantee that any forecasts made will come to pass. Forecasts are subject to numerous assumptions, risks, and uncertainties, which change over time, and Causeway undertakes no duty to update any such forecasts. Information and data presented has been developed internally and/or obtained from sources believed to be reliable; however, Causeway does not guarantee the accuracy, adequacy, or completeness of such information. Our investment portfolios may or may not hold the securities mentioned, and the securities identified and described do not represent all of the securities purchased, sold or recommended for client accounts. The reader should not assume that an investment in the securities identified was or will be profitable.

Past performance is no guarantee of future performance. In addition to the normal risks associated with investing, international investments may involve risk of capital loss from unfavorable fluctuation in currency values, from differences in generally accepted accounting principles or from economic or political instability in other nations. Emerging markets involve heightened risks related to the same factors as well as increased volatility and lower trading volume. Investments in smaller companies involve additional risks and typically exhibit higher volatility. Please see below for additional risks associated with investing in Causeway's strategies.

The benchmark index for the international small cap strategy is the MSCI ACWI ex USA Small Cap Index. This Index is a free float-adjusted market capitalization weighted index, designed to measure the equity market performance of smaller capitalization stocks in developed and emerging markets excluding the U.S., consisting of 46 country indices. The Index covers approximately 14% of the free float-adjusted market capitalization in each country. MSCI ACWI ex USA Small Cap Value Index captures small cap securities exhibiting overall value style characteristics across the MSCI ACWI ex USA Small Cap Index markets. The value investment style characteristics for index construction are defined using three variables: book value to price, 12-month forward earnings to price and dividend yield. The MSCI ACWI ex USA Small Cap Growth Index captures small cap securities exhibiting overall growth style characteristics across the MSCI ACWI ex USA Small Cap Index markets. The growth investment style characteristics for index construction are defined using five variables: long-term forward EPS growth rate, short-term forward EPS growth rate, current internal growth rate and long-term historical EPS growth trend and long-term historical sales per share growth trend.

The indices are gross of withholding taxes, assume reinvestment of dividends and capital gains, and assume no management, custody, transaction or other expenses. It is not possible to invest directly in these indices. MSCI has not approved, reviewed, or produced this report, makes no express or implied warranties or representations and is not liable whatsoever for any data in the report. You may not redistribute the MSCI data or use it as a basis for other indices or investment products. Accounts will not be invested in all the constituent securities of their benchmark indices at all times, and may hold securities not included in their benchmark indices.

Important Disclosures

This contains information about the general risks of Causeway's investment strategies. As with any investment strategy, there can be no guarantee that a strategy will meet its goals or that the strategy's performance will be positive for any period of time. The principal risks of Causeway's strategies' are listed below:

1. Market and Selection Risk

Market risk is the risk that markets will go down in value. Global economies are increasingly interconnected, and political, economic and other conditions and events (including, but not limited to, war, conflicts, natural disasters, pandemics, epidemics, inflation/deflation, and social unrest) in one country or region might adversely impact a different country or region. Furthermore, the occurrence of severe weather or geological events, fires, floods, earthquakes, climate change or other natural or man-made disasters, outbreaks of disease, epidemics and pandemics, malicious acts, cyber-attacks or terrorist acts, among other events, could adversely impact the performance of client portfolios. These events may result in, among other consequences, closing borders, exchange closures, health screenings, healthcare service delays, quarantines, cancellations, supply chain disruptions, lower consumer demand, market volatility and general uncertainty. These events could adversely impact issuers, markets and economies over the short- and long-term, including in ways that cannot necessarily be foreseen. Clients could be negatively impacted if the value of a portfolio holding were harmed by political or economic conditions or events. Moreover, negative political and economic conditions and events could disrupt the processes necessary for the management of clients' portfolios.

For example, on January 31, 2020, the United Kingdom officially withdrew from the EU (such departure from the EU, ("Brexit"). On December 24, 2020, the EU and United Kingdom signed the EU-United Kingdom Trade and Cooperation Agreement (the "TCA"), which formally took effect on May 1, 2021 and now governs the relationship between the EU and the United Kingdom. Notwithstanding the TCA, certain aspects of the relationship between the United Kingdom and EU remain unresolved and subject to further negotiation and agreement. As such, there remains uncertainty as to the scope, nature, and terms of the relationship between the United Kingdom and the EU and the effect and implications of the TCA.

The actual and potential consequences of Brexit, and the associated uncertainty, have adversely affected, and for the foreseeable future may adversely affect, economic and market conditions in the United Kingdom, in the EU and its member states and elsewhere, and may also contribute to uncertainty and instability in global financial markets. This uncertainty may, at any stage, adversely affect client investments. There may be detrimental implications for the value of an account's investments and/or the ability to implement client investment programs. This may be due to, among other things: (i) increased uncertainty and volatility in United Kingdom, EU and other financial markets; (ii) fluctuations in asset values; (iii) fluctuations in exchange rates; (iv) increased illiquidity of investments located, listed or traded within the United Kingdom, the EU or elsewhere; (v) changes in the willingness or ability of financial and other counterparties to enter into transactions, or the price at which and terms on which they are prepared to transact; and/or (vi) changes in legal and regulatory regimes to which a client or certain of its assets are or become subject.

The withdrawal of the United Kingdom from the EU could have a material impact on the United Kingdom's economy and its future growth, impacting adversely an account's investments in the United Kingdom. It could also result in prolonged uncertainty regarding aspects of the United Kingdom's economy and damage customers' and investors' confidence. Any of these events could have a material adverse effect on an account. Furthermore, client portfolios could be adversely affected if one or more countries leave the euro currency. War, terrorism and related responses and events could cause substantial market volatility, disrupt food operations and adversely affect client performance. For example, Russia's invasion of Ukraine in February 2022, the resulting responses by the U.S. and other countries, and the potential for wider conflict, have increased and may continue to increase volatility and uncertainty in financial markets worldwide. The U.S. and other countries have imposed broad-ranging economic sanctions on Russia and Russian entities and individuals, and may impose additional sanctions, including on other countries that provide military or economic support to Russia. These sanctions, among other things, restrict companies from doing business with Russia and Russian issuers, and may adversely affect companies with economic or financial exposure to Russia and Russian issuers. The extent and duration of Russia's military actions and the repercussions of such actions are not known. The invasion may widen beyond Ukraine and may escalate, including through retaliatory actions and cyberattacks by Russia and even other countries. These events may result in further and significant market disruptions and may adversely affect regional and global economies including those of Europe and the U.S. Certain industries and markets, such as those involving oil, natural gas and other commodities, as well as global supply chains, may be particularly adversely affected. Whether or not an account invests in securities of issuers located in Russia, Ukraine and adjacent countries or with significant exposure to issuers in these countries, these events could negatively affect the value and liquidity of an account's investments. In addition, armed conflict between Israel, Hamas, and other groups in the Middle East and related events could cause significant market disruptions and volatility. These and other significant events could negatively affect performance.

In addition, exchanges and securities markets may close early, close late or issue trading halts on specific securities, which may result in, among other things, an account being unable to buy or sell certain securities or financial instruments at an advantageous time or accurately price its portfolio investments.



Important Disclosures

Selection risk is the risk that the investments that a strategy's portfolio managers select will underperform the market or strategies managed by other investment managers with similar investment objectives and investment strategies. Causeway's use of quantitative screens and techniques may be adversely affected if it relies on erroneous or outdated data.

2. Management Risk

Causeway's opinion about the intrinsic worth of a company or security may be incorrect; Causeway may not make timely purchases or sales of securities or changes in exposures for clients; a client's investment objective may not be achieved; or the market may continue to undervalue securities holdings or exposures, or overvalue short exposures. In addition, Causeway may not be able to dispose of certain securities holdings or exposures in a timely manner. Certain securities or other instruments in which an account seeks to invest may not be available in the quantities desired. In addition, regulatory restrictions, policies, and procedures to manage actual or potential conflicts of interest, or other considerations may cause Causeway to restrict or prohibit participation in certain investments.

3. Issuer-Specific Risk

The value of an individual security or particular type of security can be more volatile than the market as a whole and can perform differently from the value of the market as a whole due to, for example: a reason directly related to the issuer; management performance; financial leverage; reduced demand for the issuer's goods or services; the historical and prospective earnings of the issuer; or the value of the issuer's assets. In particular, concentrated strategies may hold a smaller number of holdings, subjecting accounts using these strategies to increased issuer risk, including the risk that the value of a security may decline.

4. Value Stock Risk

Value stocks are subject to the risks that their intrinsic value may never be realized by the market and that their prices may go down. Causeway's value discipline sometimes prevents or limits investments in stocks that are in a strategy's benchmark index.

5. Dividend-Paying Stock Risk

Dividend-paying stocks may underperform non-dividend paying stocks (and the stock market as a whole) over any period of time. The prices of dividend-paying stocks may decline as interest rates increase. In addition, issuers of dividend-paying stocks typically have discretion to defer or stop paying dividends. If the dividend-paying stocks held by an account reduce or stop paying dividends, the account's ability to generate income may be adversely affected.

6. Quantitative Strategy Risk

Data for emerging markets companies may be less available and/or less current than data for developed markets companies. Causeway will use quantitative techniques to generate investment decisions and its analysis and stock selection can be adversely affected if it relies on erroneous or outdated data. Any errors in Causeway's quantitative methods may adversely affect performance. In addition, securities selected using quantitative analysis can perform differently from the market as a whole as a result of the factors used in the analysis, the weight assigned to a stock-specific factor for a stock or the weight placed on each factor, and changes in a factor's historical trends. The factors used in quantitative analysis and the weights assigned to a stock-specific factor for a stock or the weight placed on each factor may not predict a security's value, and the effectiveness of the factors can change over time. These changes may not be reflected in the current quantitative model.

7. Foreign and Emerging Markets Risk

Foreign security investment involves special risks not present in U.S. investments that can increase the chances that an account will lose money. For example, the value of an account's securities may be affected by social, political and economic developments and U.S. and foreign laws relating to foreign investment. Further, because accounts invest in securities denominated in foreign currencies,



Important Disclosures

accounts' securities may go down in value depending on foreign exchange rates. Other risks include trading, settlement, custodial, and other operational risks; withholding or other taxes; and the less stringent investor protection and disclosure standards of some foreign markets. All of these factors can make foreign securities less liquid, more volatile, and harder to value than U.S. securities. These risks are higher for emerging markets and frontier market investments, which can be subject to greater social, economic, regulatory and political uncertainties. These risks are also higher for investments in smaller and medium capitalization companies. These risks, and other risks of investing in foreign securities, are explained further below.

- The economies of some foreign markets often do not compare favorably with that of the U.S. with respect to such issues as growth of gross domestic product, reinvestment of capital, resources, and balance of payments positions. Certain foreign economies may rely heavily on particular industries or foreign capital. For example, weakening of global demand for oil may negatively affect the economies of countries that rely on the energy industry. They may be more vulnerable to adverse diplomatic developments, the imposition of economic sanctions against a country, changes in international trading patterns, trade barriers and other protectionist or retaliatory measures.
- Governmental actions – such as the imposition of capital controls, nationalization of companies or industries, expropriation of assets or the imposition of punitive taxes – may adversely affect investments in foreign markets.
- The governments of certain countries may prohibit or substantially restrict foreign investing in their capital markets or in certain industries, or may restrict the sale of certain holdings once purchased. In addition, the U.S. government may restrict U.S. investors, including Causeway and its clients, from investing in certain foreign issuers. Any of these restrictions could severely affect security prices; impair an account's ability to purchase or sell foreign securities or transfer its assets or income back to the U.S.; result in forced selling of securities or an inability to participate in an investment Causeway otherwise believes is attractive; or otherwise adversely affect an account's operations.
- Other foreign market risks include foreign exchange controls, difficulties in pricing securities, defaults on foreign government securities, difficulties in enforcing favorable legal judgments in foreign courts, and political and social instability. Legal remedies available to investors in certain foreign countries are less extensive than those available to investors in the U.S. or other foreign countries. Many foreign governments supervise and regulate stock exchanges, brokers and the sale of securities less than the U.S. government does. Foreign corporate governance may not be as robust as in more developed countries. As a result, protections for minority investors may not be strong, which could affect security prices.
- Accounting standards in other countries are not necessarily the same as in the U.S. If the accounting standards in another country do not require as much disclosure or detail as U.S. accounting standards, it may be harder for the portfolio managers to completely and accurately determine a company's financial condition or find reliable and current data to process using quantitative techniques. U.S. regulators may be unable to enforce a company's regulatory obligations.
- Because there are usually fewer investors on foreign exchanges and smaller numbers of shares traded each day, it may be difficult for an account to buy and sell securities on those exchanges. In addition, prices of foreign securities may fluctuate more than prices of securities traded in the U.S.
- Foreign markets may have different clearance and settlement procedures. In certain markets, settlements may not keep pace with the volume of securities transactions. If this occurs, settlement may be delayed and the assets in a client's account may be uninvested and may not be earning returns. An account also may miss investment opportunities or not be able to sell an investment because of these delays.
- If permitted by a client, Causeway may (but is not obligated to) cause an account to enter into forward currency contracts or swaps to purchase and sell securities for the purpose of increasing or decreasing exposure to foreign currency fluctuations from one country to another, or from or to the Eurozone region, in the case of the Euro. There can be no assurance that such instruments will be effective as hedges against currency fluctuations or as speculative investments. Moreover, these currency contracts or swaps are derivatives (see "Derivatives Risk" below).
- Changes in foreign currency exchange rates will affect the value of an account's foreign holdings. Further, companies in foreign countries may conduct business or issue debt denominated in currencies other than their domestic currencies, creating additional risk if there is any disruption, abrupt change in the currency markets, or illiquidity in the trading of such currencies.
- The costs of foreign securities transactions tend to be higher than those of U.S. transactions.
- International trade barriers or economic sanctions against foreign countries may adversely affect an account's foreign holdings.



Important Disclosures

The performance of some of Causeway's strategies, in particular the emerging markets and China equity strategies, may be affected by the social, political, and economic conditions within China. After decades of unprecedented growth, China currently faces several headwinds, including a slowing economy, high municipal debt, slowing manufacturing and exports, high youth unemployment, a housing market downturn and deflation. China's securities markets have less regulation and are substantially smaller, less liquid and more volatile than the securities markets of more developed countries, and hence are more susceptible to manipulation, insider trading, and other market abuses. As with all transition countries, China's ability to develop and sustain a credible legal, regulatory, monetary and socioeconomic system could influence the course of outside investment. China has yet to develop comprehensive securities, corporate, or commercial laws; its market is relatively new and undeveloped; and the rate of growth of its economy is slowing. Government policies have recently contributed to economic growth and prosperity in China, but such policies could be altered or discontinued at any time, and without notice. Changes in government policy and slower economic growth may restrict or adversely affect an account's investments. There is no guarantee that the Chinese government will take action to support real estate or financial markets, or that any action taken by the government would be effective. Such events, including government intervention, could have a significant adverse impact on the Chinese, regional and global markets and on an account's holdings. In addition, certain accounts may obtain exposure to the China A-Share market through participation notes, warrants or similar equity-linked notes, which are derivative instruments that can be volatile and involve special risks including counterparty risk, liquidity risk, and basis risk. These instruments may be based on an index or exposures selected by Causeway. Alternatively, certain accounts may directly invest in China A-Shares listed and traded on the Shanghai Stock Exchange or Shenzhen Stock Exchange through the Shanghai-Hong Kong or Shenzhen – Hong Kong Stock Connect links ("Stock Connect"). Trading through Stock Connect is subject to a number of risks including, among others, trading, clearance and settlement risks, currency exchange risks, political and economic instability, inflation, confiscatory taxation, nationalization, expropriation, Chinese securities market volatility, less reliable financial information, differences in accounting, auditing, and financial standards and requirements from those applicable to U.S. issuers, and uncertainty of implementation of existing law in the People's Republic of China. Further developments are likely and there can be no assurance of Stock Connect's continued existence or whether future developments regarding the program may restrict or adversely affect an account's investments or returns. In addition, securities of certain Chinese issuers are, or may in the future become, restricted, and a client account may be forced to sell these restricted securities and incur a loss as a result.

Certain accounts may gain exposure to certain operating companies in China through legal structures known as variable interest entities ("VIEs"). In China, ownership of companies in certain sectors by non-Chinese individuals and entities (including U.S. persons and entities) is prohibited. To facilitate indirect non-Chinese investment, many China-based operating companies have created VIE structures. In a VIE structure, a China-based operating company establishes an entity outside of China that enters into service and other contracts with the China-based operating company. Shares of the entities established outside of China are often listed and traded on an exchange. Non-Chinese investors hold equity interests in the entities established outside of China rather than directly in the China-based operating companies. This arrangement allows U.S. investors to obtain economic exposure to the China-based operating company through contractual means rather than through formal equity ownership. An investment in a VIE structure subjects certain accounts to the risks associated with the underlying China-based operating company. In addition, certain accounts may be exposed to certain associated risks, including the risks that: the Chinese government could subject the China-based operating company to penalties, revocation of business and operating licenses or forfeiture of ownership interests; the Chinese government may outlaw the VIE structure, which could cause an uncertain negative impact to existing investors in the VIE structure; if the contracts underlying the VIE structure are not honored by the China-based operating company or if there is otherwise a dispute, the contracts may not be enforced by Chinese courts; and shareholders of the China-based operating company may leverage the VIE structure to their benefit and to the detriment of the investors in the VIE structure. If any of these actions were to occur, the market value of investments in VIEs would likely fall, causing investment losses, which could be substantial.

On March 31, 2023, the "Trial Administrative Measures of Overseas Securities Offering and Listing by Domestic Companies" (the "Trial Measures") by the CSRC came into effect. The Trial Measures requires Chinese companies that pursue listings outside of China, including those that do so using the VIE structure, to make a filing with the CSRC. Although the Trial Measures acknowledge the VIE structure, they are not an endorsement, nor is there a guarantee the CSRC will not set out more stringent requirements that interfere with the operation of VIE structures by listed Chinese companies.

The PCAOB historical has been restricted from inspecting the audit work and practices of registered accountants in the PRC. On August 26, 2022, the PCAOB entered into an agreement with the China Securities Regulatory Commission and the Ministry of Finance of the PRC that permits the PCAOB to inspect registered accountants headquartered in mainland China and Hong Kong. There remains uncertainty as to whether the PRC will allow the PCAOB unrestricted access to the audit papers of PRC issuers. As a result, there continues to be the risk that audits performed by registered accountants in mainland China and Hong Kong may continue to be less reliable than those performed by other firms subject to PCAOB inspection, and that material accounting and financial information about PRC issuers may be unavailable or unreliable.

Important Disclosures

8. Small and Medium Capitalization Companies Risk

Some of Causeway's strategies, and in particular the international small cap, global small cap, and emerging markets strategies, may invest in smaller and medium capitalization issuers. The values of securities of smaller and medium capitalization companies, which may be less well-known companies, can be more sensitive to, and react differently to, company, political, market, and economic developments than the market as a whole and other types of securities. Smaller and medium capitalization companies can have more limited product lines, markets, growth prospects, depth of management, and financial resources, and these companies may have shorter operating histories and less access to financing, creating additional risk. Smaller and medium capitalization companies in countries with less-liquid currencies may have difficulties in financing and conducting their business. Further, smaller and medium capitalization companies may be particularly affected by interest rate increases, as they may find it more difficult to borrow money to continue or expand operations, or may have difficulty in repaying any loans that have floating rates. Because of these and other risks, securities of smaller and medium capitalization companies tend to be more volatile and less liquid than securities of larger capitalization companies. During some periods, securities of smaller and medium capitalization companies, as asset classes, have underperformed the securities of larger capitalization companies.

Contact Us

For more information, please contact:

Paul O'Grady

Head of Business Development

Causeway Capital Management LLC

11111 Santa Monica Blvd, 15th Floor | Los Angeles CA 90025

T: + 1.310.231.6143 | ogrady@causewaycap.com